

**Director...
something big is coming...**

GrowHouse

An AI-governed Web2.5 MMO and trading simulator built on Polygon.

- Live product with adaptive balance controls already wired to market signals
- Off-chain game loop keeps play fast while on-chain exits stay gated and deliberate
- Founder-built system now ready to be framed as an investable scaling story

LIVE TODAY • 31 tracked holders • 420BT / WPOL active

GameFi dies when static systems meet dynamic stress

THE PROBLEM

The typical failure pattern



Most crypto games are brittle financial loops dressed up as gameplay. When liquidity dries up, exploits appear, or emissions outrun sinks, the system cannot adapt.

- Fixed reward schedules cannot survive live market pressure
- Fully on-chain loops expose treasury to bots and instant extraction
- If retention depends on yield alone, players leave when the numbers tighten



The result is a short, expensive bonfire.

The solution: decouple play from the chain, then add adaptive control

THE SOLUTION

On-chain treasury

- 420BT liquidity routes on Polygon
- Withdrawal gate + holder requirement
- Future cosmetic and staking surfaces



Blaze control layer



Reads live pair health and adjusts pacing, friction, and tempo before the economy snaps.



Off-chain game loop

- Zero-gas internal currency for fast engagement
- MMO farming, companions, and trading loops
- Arcade layer acts as sink, not treasury drain

This makes the daily loop fast and fun while keeping real liquidity behind controlled gates.

A living ecosystem, not a static landing page

THE PRODUCT



Three connected loops

Seed Farms

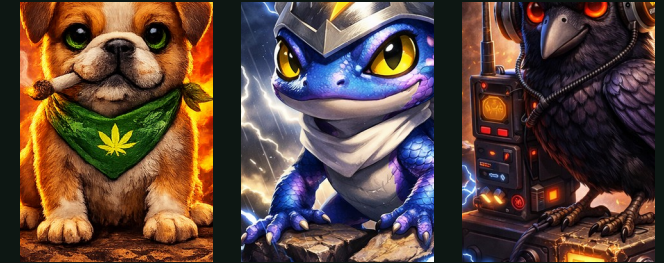
Progression-based resource harvesting, upgrades, and repeatable daily play.

Trading / Arbitrage

District pricing and future AI-faction hazards create strategic market play.

Arcade sink

High engagement play that can stay entertaining without exposing the treasury to every click.



Companions, identity, and collectibles deepen retention and sink design.



Blaze Balance Engine: adaptive pacing instead of static emissions

THE SECRET WEAPON



GUARD

ED WPOL pair thin, volume low, volatility calm

What Blaze reads

- Primary route: 420BT / WPOL
- Fallback route: 420BT / USDC
- Current signal mix: thin liquidity • low volume • calm volatility

What Blaze changes

- Storm pressure gain: 0.90x
- Event intensity: 0.92x
- Jackpot growth: 0.94x
- Reward pressure: 0.92x

Macro-resilience, not price manipulation

The goal is simple: when the market chokes, the world hardens its pacing, hazard profile, and event tempo so the ecosystem can survive dynamic stress.

Treasury defense is the business model

CHECK-WRITING SLIDE

Three layers protect the exit lane

1. The 100k gate

Free-to-play is welcome. Free-to-extract is not. Wallets must hold the threshold before they can touch the withdrawal lane.

2. Time-locked yield boosts

7 / 14 / 30 day lock windows absorb internal liquidity and make future treasury liabilities visible and predictable.

3. Staged risk engine

Manual + capped flow at launch evolves into bounded risk-scored automation for small, low-risk withdrawals.



7D • 14D • 30D
Lock windows turn a potential Friday bank run into a visible liability schedule.

This is how the treasury scales to volume without ever being left wide open.

Distribution starts community-native, not app-store dependent

The brand is culture-forward, so the go-to-market is built for browsers, wallets, creators, referrals, and social proof first.

Browser-native

choke point. No dependence on mobile UA arbitrage.

Referral +

Players become the local growth engine instead of passive users.

Achievement

Proof of participation and social flex without diluting the core token.

Portable

The same engine can later be skinned for broader campaigns without changing the economy core.



Proof of execution: the system is live, not theoretical

LIVE TRACTION

31

tracked holders
manual cache until
automated sync

LIVE

market route
status
420BT / WPOL

GUARDE

D
balance mode
WPOL pair thin

v2c+

recent hardening
safe export + patch rails



Current live readouts

- 420BT / WPOL primary route with 420BT / USDC fallback
- Current posture is guarded because wpol pair thin, volume low, volatility calm
- Recent hardening passes improved admin auth propagation, patch safety, and export tooling

Founder-led today. De-risked into a company after the round.



Founder
30 years of full stack architecture and systems thinking, focused on resilient design instead of feature theater.

What exists today

- Live front end, admin tooling, market telemetry, and adaptive balance controls
- AI-assisted workflows already compress design, copy, tooling, and iteration time
- Capital efficiency is proven, but key-man risk is still real

First hires after the round

- Senior backend / security engineer
- Growth and community lead
- Live-ops / content support

The raise is about removing bottlenecks, hardening the machine, and scaling it into a durable operating company.

Raising \$1.5M seed to harden and scale a live Web2.5 economy

THE ASK

Use of funds

40%

Engineering & architecture

Backend/security hires, withdrawal automation, removal of founder bottlenecks

\$600
k

20%

Security & compliance

Contract audits, off-chain penetration testing, legal and risk scaffolding

\$300
k

20%

Growth & live-ops

Community, creator loops, content cadence, and retention infrastructure

\$300
k

20%

Runway & ops

18-24 months of lean runway plus server and API scaling

\$300
k

Round milestones

- Deploy bounded risk-scoring withdrawal engine
- Launch full AI-faction hazard layer and trading expansion
- Scale from early traction to 10,000+ daily active users
- Turn a founder-built system into a durable company

Ask: a partner who values disciplined economics as much as playful world-building.